



OSGi in the Automotive Environment



Dave Marples

Chief Scientist, Network Systems Research
Telcordia Technologies Inc.

Chief Architect, GST
Fellow, OSGi Alliance



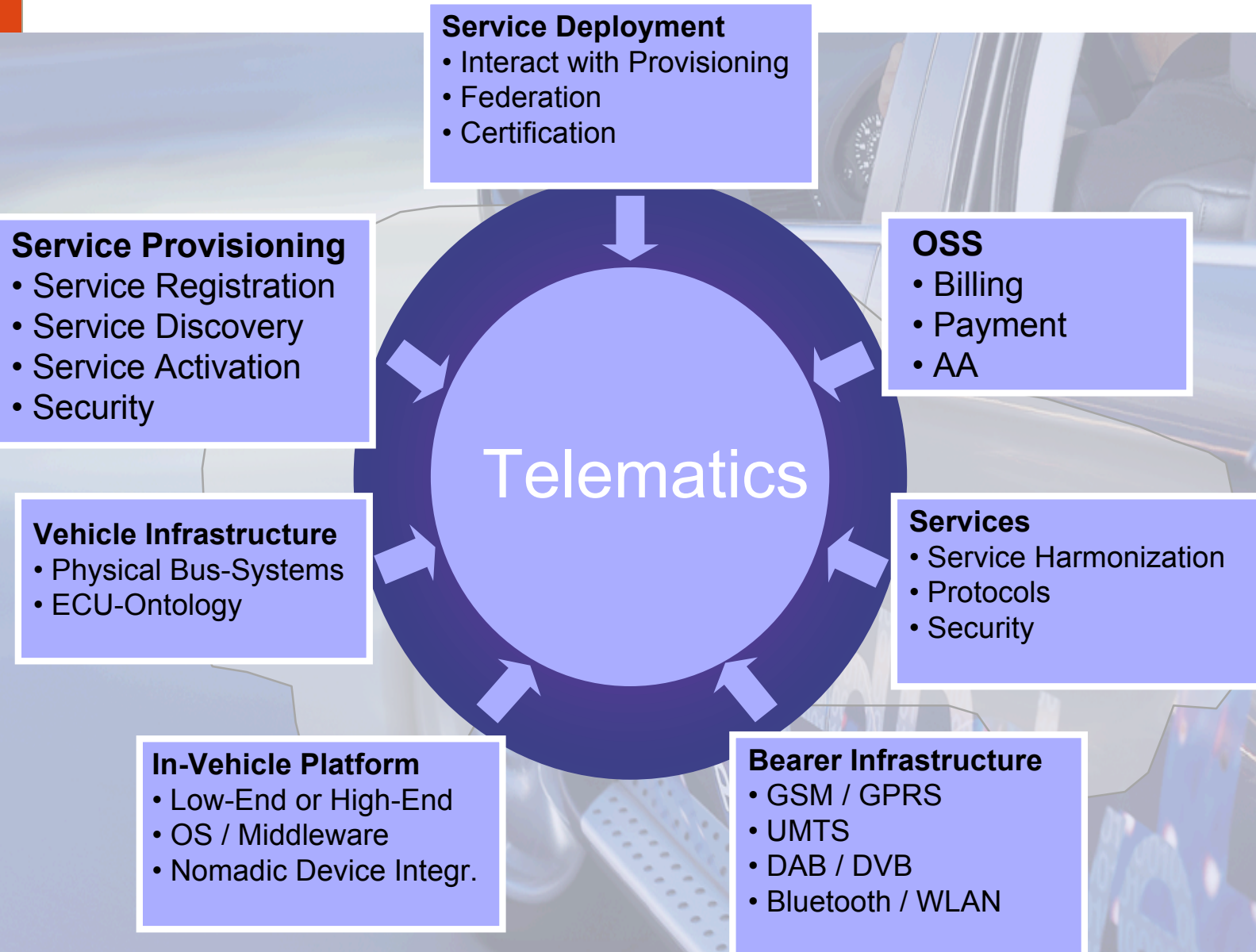
An SAIC Company

Telematics: Definition

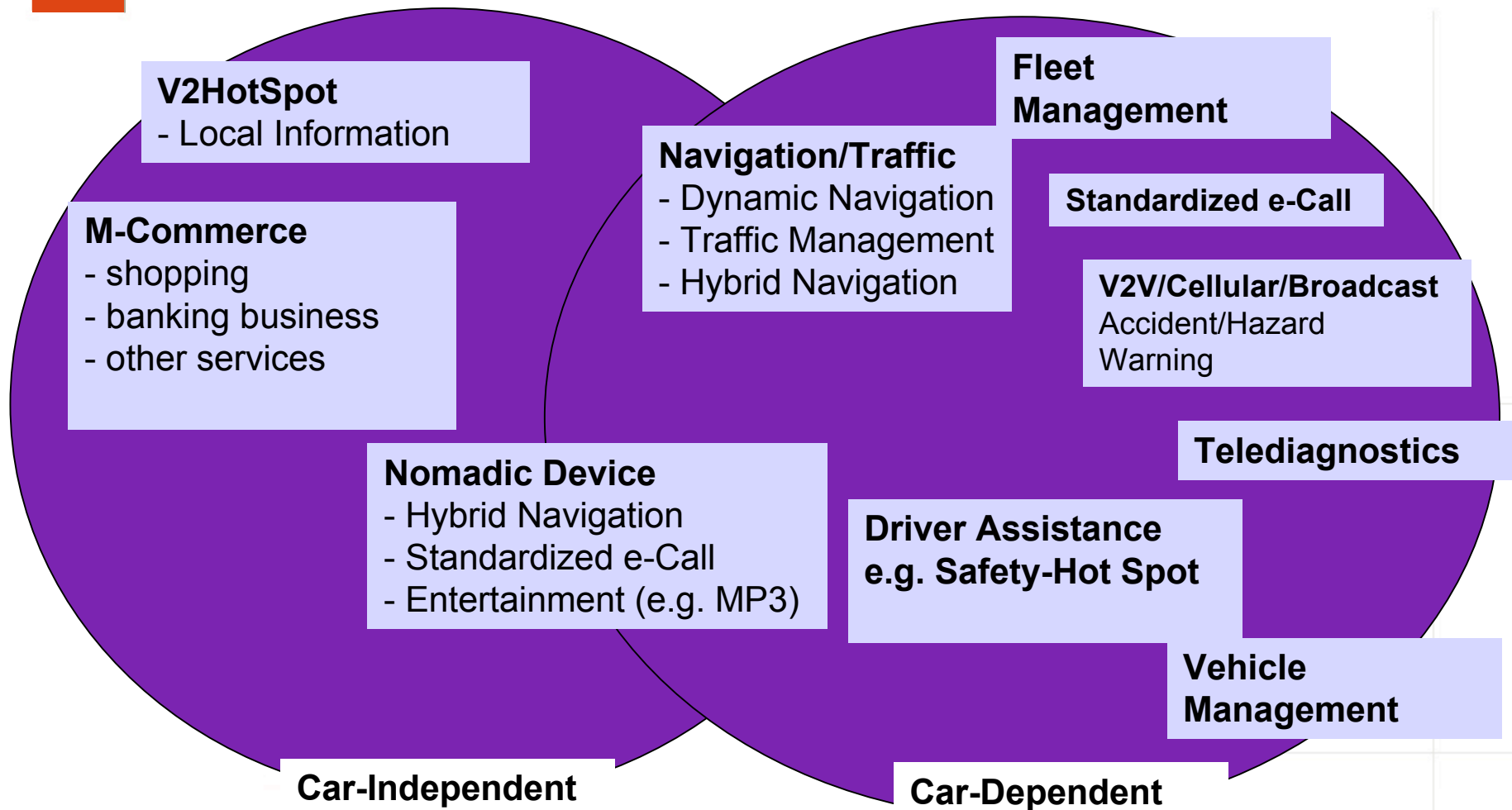
Services delivered to the mobile user with a specific focus on, or a particular added value in an automobile environment.

BMW ConnectedDrive “Translation”:
An innovative concept which interconnects information, communication and assistance systems inside and outside the vehicle, location based and destination oriented.

Challenges: The Networked Vehicle



Telematics Services Tomorrow



Open Questions

- What kinds of services will people expect to see?
- How will users, vehicles and infrastructure be represented in such a dynamic model?
- How will these systems be administered and managed?
- Can advanced computational models bring value to the Telematics ecosystem?
- How will the asynchronous and potentially transient nature of communication be addressed?
- How can we ensure security in such a dynamic world?

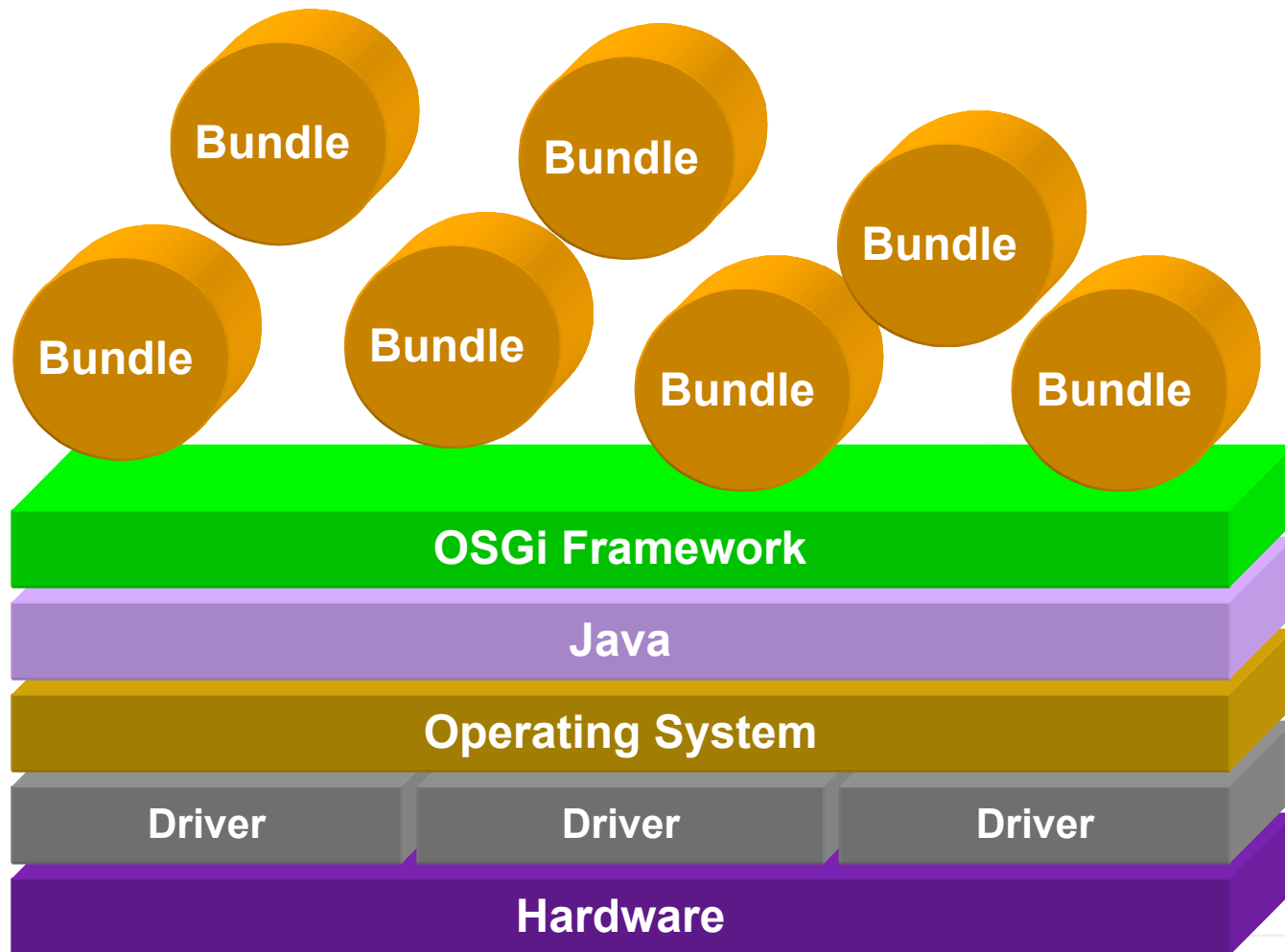
Open Competition: See <http://www.gstforum.org/> for more information

The OSGi Service Platform

- Service Oriented Architecture
- Life-cycle Management
- Collaboration
- Open Management Architecture
- Very highly dynamic

Designed to enable an entirely new category of smart devices with flexible and managed deployment of services, the OSGi Service Platform offers an open, common architecture for service providers, developers, software vendors, gateway operators and equipment vendors to develop, deploy and manage services in a coordinated fashion

Overall Architecture



Thanks for listening